

With rhythmic incisions on the reverse side of the paper, the author recurrently revisits the forest as an alchemic and symbolic pursuit.

Many perceive this work as sap, blood, skin, paper, scar or tribal tattoo.

The forest evokes claustrophobia and melancholy as the forest eludes inclusion by the observer due to the hermetic disposition of the drawings.



INTERNATIONAL EMERGING
ARTIST AWARD OF DUBAI
LAUREATES OF THE
ILLUSTRATION & DRAWING
CATEGORY

27.05.16 > 26.06.16

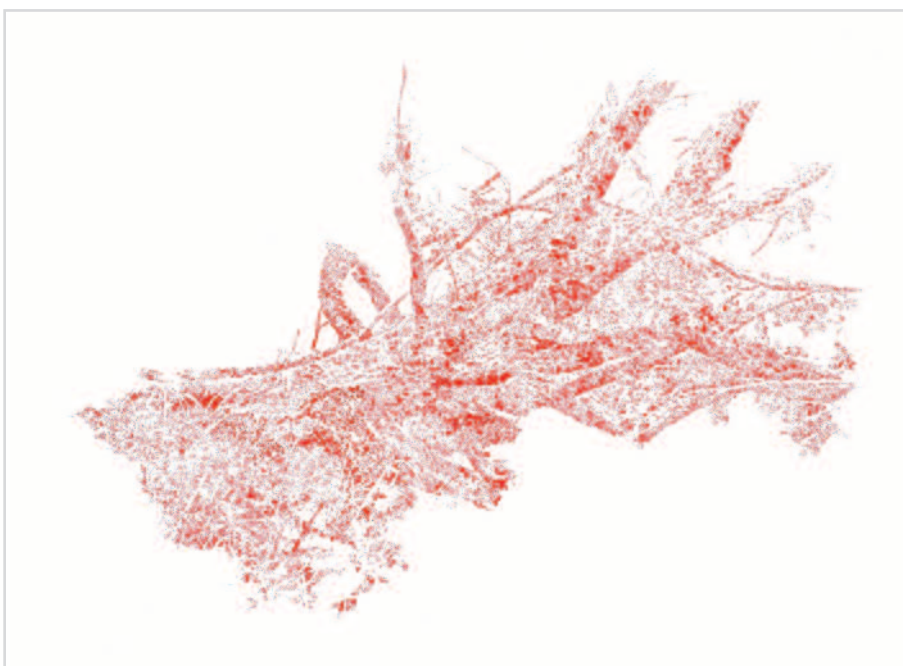
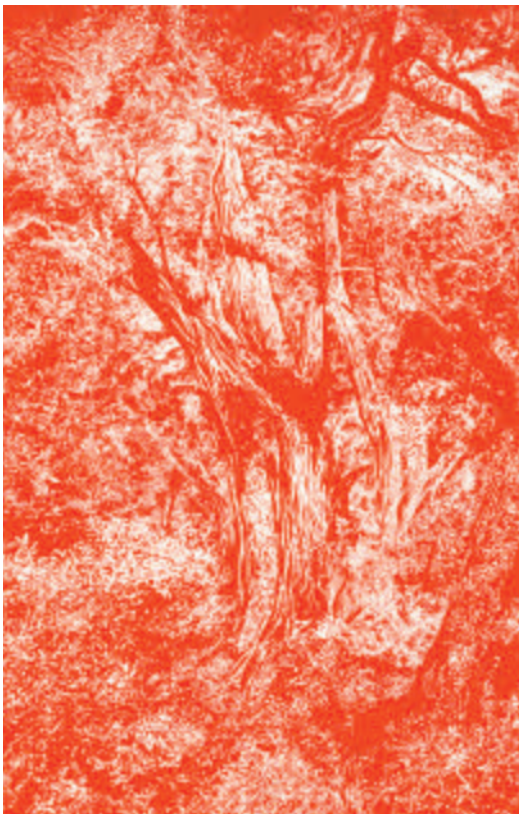
OPENING

26.05.16 18:00 > 20:30



INTERNATIONAL SELECTION / AWARDS

- open studios (drawing) - the land of the lost losers - 2014 Lisbon
- art olimpia prize (2nd Place) - 2015 Tokio
- emerging artista ward -TAG bxl gallery - 2016 Brussels
- Ouverture d'ateliers d'artistes - 2106 Marseille
- ward LYNX 2016 alla Lokarjeva Galerija di Ajdovščina - 2016 Slovenia



CURRICULUM VITAE

PROFILE

NAME : António Fernando Faria Costa

DATE OF BIRTH: 18/04/1966

NATIONALITY: Portuguese

ADDRESS : Mato Grosso Street, 14 - 4 • 1170-236 Lisbon

TELEPHONE: 96 719 69 59

E- MAIL: faria.golpestado@mail.telepac.pt

EDUCATION

- Degree in Visual Communication from IADE - Institute of Design , Lisbon in 1991 (Degree) .
- Jewellery Course frequency at Contacto Directo School , Lisbon in 2000 .
- Degree in Arts (advanced and project) of AR.CO , Lisbon. 2010

SELECTED EXHIBITIONS ARTS

- VI Spring Salon Casino Estoril - Honorable Mention in Drawing - 1989 Estoril
- Small Format – Galeria Viragem – 1989 Cascais
- Young Portuguese Painting - Almada Negreiros Gallery - Ministry of Culture - 1989 Lisbon
- 4 Artists - Moira Gallery - 1989 Lisbon
- Drawings - Targus - 1993 Lisbon
- Interior View - Projecto de instalações- 1995 Lisbon
- coexistences Project - at the Biennial Experience - 1999 Lisbon
- Voyager Project - inserted at the Biennial Experience - 2001 , Barcelona , London
- ISO Project published in Italy ON design and magazine experience Spain
- National Hall of Portuguese Illustration - 1999 and 2000 Lisbon
- Oficina - Box Gallery - 2000 Lisbon
- Participation with Truetypechair chair design in the book Design The Glass Chair , published by IST Press in November 2001
- Transfiguration - ISPA - Institute of Applied Psychology - 2005 Lisbon
- Festival ON port bay 2007- Madeira
- Grafias (set of illustrations made for review) - ISPA - University Institute - 2010 Lisbon
- Dead Center of Europe (drawing) - Kertesz 29 Gallery - 2011 Budapest
- Festival ON port bay 2011- Madeira
- Infracção (THIS IS NOW starting from goya war disaster) - designarte - 2011 Lisbon
- Encarnar o Fixo e o Volátil (obejcts, drawing and jewelry) articulates Gallery - 2011 Lisbon
- published in klimt02 contemporary jewelery
- the land of the lost losers ((drawing)) - the land of the lost losers - 2012, Lisbon
- open studios (drawing - the land of the lost losers - 2013 Lisbon
- I = II salgadeiras gallery (drawing) - 2014 Lisbon
- between the reverse and the resonance (drawing) - ispa malagatana gallery - 2014 Lisbon
- Recum - Mart artistic projects - 2014 Lisbon
- open studios (drawing) - the land of the lost losers - 2014 Lisbon
- chateau de servières marseille A L'HEURE DU DESSIN, 2D TEMPS – 2015 Marselha
- mostra 2015 lisbon
- art olimpia prize (2nd Place) - 2015 Tokio
- open studios (drawing) - the land of the lost losers - 2015 Lisbon
- emerging artista ward -TAG bxl gallery - 2016 Brussels
- mostra 2016 lisbon
- Ouverture d'ateliers d'artistes - 2106 Marseille
- ward LYNX 2016 alla Lokarjeva Galerija di Ajdovščina - 2016 Slovenia

PROJECTS GRAPHICS INTERNATIONAL MAIL ART

- Beuys and Girls – Galeria Monumental, Lisbon
- Arte está Morta – São Paulo – Brasil
- Strange to Strange – Oxford
- Gorbi – Tokio
- Manual do Viajante em Portugal – Museu Zollendorf – Bélgica • Projecto Freedom – Califórnia